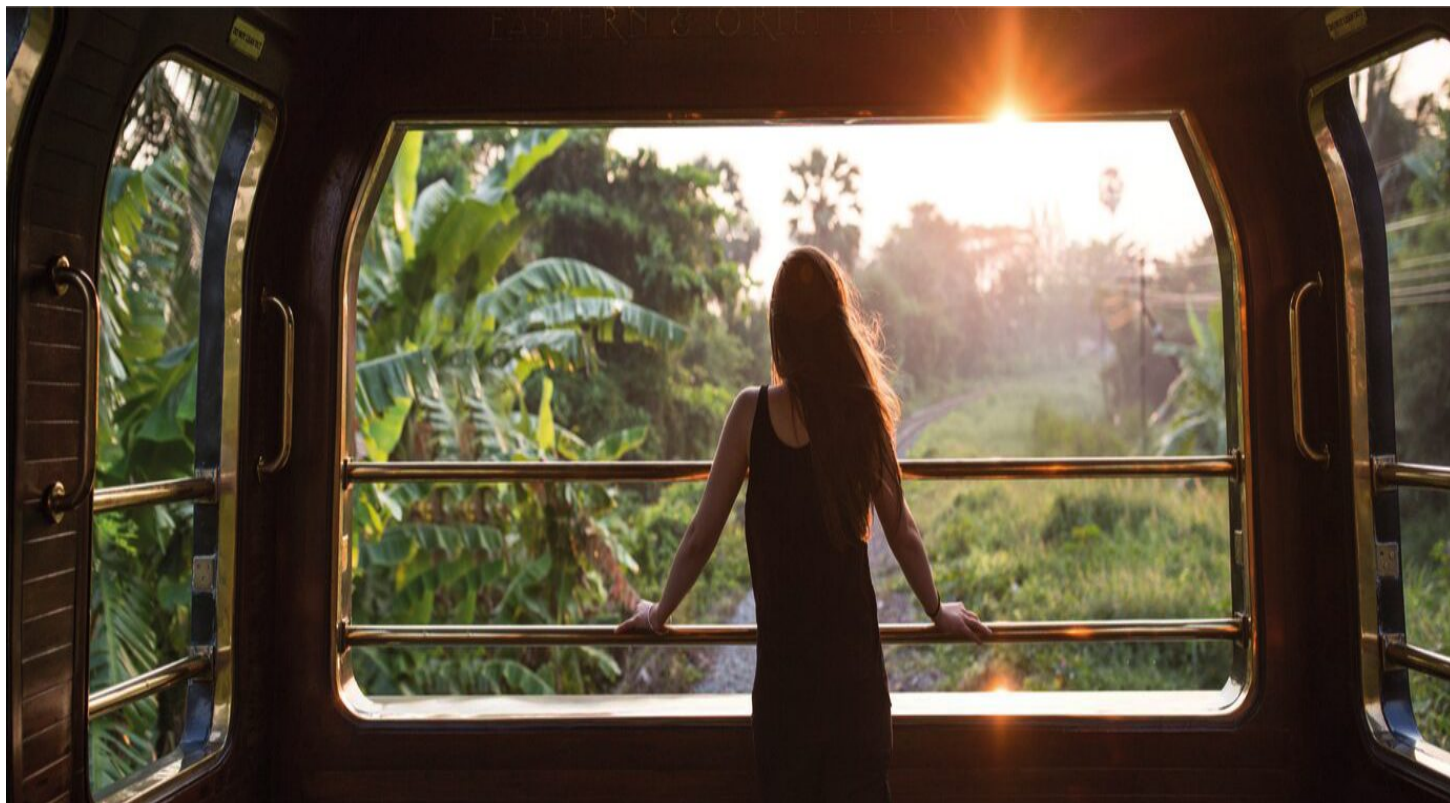


tmr.

TAILOR MADE RAIL

Eastern & Oriental Express: Wild Malaysia

From £5,899 per person // 10 days



Enjoy a luxurious overnight train journey through Wild Malaysia on a scenic loop from Singapore. You'll experience fascinating tours and wonderful landscapes off the train as well as sumptuous meals and impeccable service onboard.

The Essentials

- Explore the sights and attractions of Singapore
- Experience the luxury of the Eastern & Oriental Express through Malaysia
- Visit ancient Taman Negara National Park
- Spend time in historic George Town, Penang

Tailor make your holiday

- Choose your departure date
- Upgrade your hotels
- Add extra nights, destinations and/or tours

What's included

- Return flights to Singapore in Economy Class
- Private transfers to and from Singapore Airport
- Private transfers to and from Woodlands Station
- Pullman cabin on the Eastern & Oriental Express with 3 nights aboard the train and full table d'hôte dining
- Choice of excursions off the train
- 4 nights' 5* hotel accommodation with breakfast
- Despatch of tickets by email, post or collection from our London office

- Itinerary -



Days 1 & 2 - Fly To Singapore

Fly overnight to Singapore from the UK. When you land in Changhi airport, you'll be met by a driver who will take you directly to your accommodation, the Fullerton Hotel (or similar), where you will be spending the next 3 nights. Once you've settled in, why not head out for an early dinner?



Days 3 & 4 - Singapore

Enjoy two full days at leisure in Singapore. This diverse city has many distinct, fascinating districts to explore. Whether you want to wander barefoot around a Hindu temple in Little India, top up your tan at one of the East Coast beaches or shop until you drop on Orchard Road, there's something for everyone here. After a long day of exploration, why not enjoy some authentic Malay food in Kampong Glam or swim in one of the city's huge outdoor, palm fringed swimming pools.



Day 5 - Board The Eastern & Oriental Express

After another free morning in Singapore, it's time to meet your transfer driver who will take you to Woodlands Station to board the striking green and cream carriages of the Eastern & Oriental Express. Settle into your modern cabin and enjoy afternoon tea whilst watching the passing verdant landscapes, which will prepare you for your immersion into wild Malaysia. Dinner will be served in one of the train's opulent dining cars, accompanied by onboard entertainment. Afterwards, why not head to the Bar Car to relax with fellow travellers before retiring to your cabin, which will have been transformed into an inviting bedroom.



Day 6 - Taman Negara National Park

Your journey continues today through the wildest landscapes of Asia. After breakfast, you'll pull into Merapoh station where you disembark for a visit to Taman Negara National Park, one of the oldest tropical rainforests in the world. You can choose from a variety of excursions. Take a photography course in the national park, find out more about the jungle's edible ingredients or enjoy a thrilling safari to see native species including macaques, water buffalo and the endangered Malayan tiger. Return to the train in anticipation of a delicious lunch and dinner onboard, with rolling scenery of rice paddy fields, rural Malaysian villages and palm trees.



Day 7 - West Coast Line - Penang

This morning, enjoy breakfast aboard the train before alighting for the crossing to Penang Island. Once there, you have a choice of options. You can take a vespa tour of the Old Quarter and visit some local artists in their studios. You can shop for specialities from food shops before cooking local dishes in a cookery class. Or you can explore independently with your own tri-shaw driver! Rejoin the train at Butterworth for lunch and a leisurely afternoon on board. You can enjoy an optional visit to the Malaysian city of Ipoh or continue relaxing on the train before you enjoy a refreshing cocktail this evening accompanied by fantastic live entertainment before settling down for a sumptuous final dinner on board.



Day 8 - Arrival Back In Singapore

Enjoy breakfast in your cabin at a time to suit you before you arrive in Singapore at around 10.30. A transfer will be waiting to take you back to the Fullerton Hotel (or similar) for a 2-night stay. Head out to explore this city and sovereign state in the afternoon, or choose to simply relax and unwind in your hotel, making use of some of the luxurious facilities on offer.



Days 9 & 10 - Singapore To London

Check out of your hotel today and head back to the airport with your private transfer. Take an overnight flight back to the UK with the opportunity to reflect on your fantastic holiday.

Pricing

Prices from £5,899 per person

These prices are based on economy flights. They are based two people sharing a twin or double room in the hotels and a Pullman Cabin onboard the Eastern & Oriental Express. Single supplements will apply for sole occupancy.